

# NOBLELIFT

**ENTRY LEVEL  
STACKER  
2200 LBS**

**(NEW)**



## **ADVANTAGES**

- Ideal solution for low-duty applications.
- Built-in charger for high autonomy.
- Battery discharge indicator with automatic lift cut-off function for higher battery lifetime.
- 4-wheel design with sideways tiller for high stability and perfect view.

**ECL22M**



# NOBLELIFT



## Optional straddle leg

Adjustable straddle leg design, suitable for diverse pallet sizes and more stability.



## Several masts

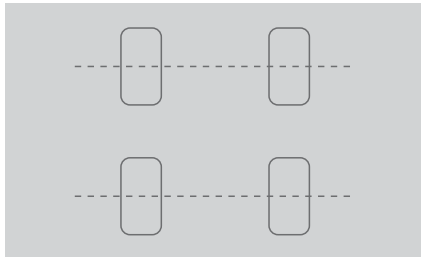
2 single mast versions (63inch, 78.7inch lift height) and one 2-stage Duplexmast with 114inch lift height (All with perfect view through the mast). b5= 27inch and straddle leg version optional. (b5=22.4inch standard).





#### ▶ Built-in charger

The built-in charger makes operations more autonomy and increases the operating range.



#### ▶ Stability

4-Wheel design with sideways tiller for excellent view and maneuverability as well as high stability.



#### ▶ Robust profile

Robust mast with real mast profiles for perfect stability, accuracy and high lifetime.



#### ▶ Powerful battery

2x12V 85Ah powerful main-tenance free batteries (option 2x12V 106Ah).



#### ▶ Battery deep discharge protection

Proofed and ergonomic emergency button and discharge indicator, more robust and reliable than other. The included automatic battery protection ensures high lifetime for the batteries.

#### ▶ Proofed components

Proofed components such as sensors, micro-switches, controller and hydraulic power- pack from international brands.

#### ▶ Fulfilling standards

Fulfilling the actual valid European standards, also in ISO 13849, performance level.

#### ▶ Applications

Ideal economic solution for all indoor low duty and occasional stacking operations.



#### ▶ Economic robust handle

Robust but economic handle with steel housing and plastic coating ensures reliable and comfortable operation.

## Distinguishing mark

1.2	Manufacturer's type designation		ECL22M-114
1.3	Power(battery,diesel,petrol gas>manual)		Battery
1.4	Operator type		Pedestrian
1.5	Load Capacity / rated load	Q (lbs)	2200
1.6	Load centre distance	C (in)	23.6
1.8	Load distance, centre of drive axle to fork	X (in)	28.9
1.9	Wheelbase	y (in)	50.4

## Weight

2.1	Service weight	lbs	1663
2.2	Axle loading, laden front/rear	lbs	1729/2134
2.3	Axle loading, unladen front/ rear	lbs	1166/497

## Tires, chassis

3.1	Tires		Polyurethane(PU)
3.2	Tire size, front	φx w (in)	8.7×2.8
3.3	Tire size, rear	φx w (in)	3.1×3.7
3.4	Additional wheels (dimensions)	φx w (in)	4.9×2.4
3.5	Wheels, number front/ rear(x=driven wheels)		1×+ 1/2
3.6	Tread, front	b10 (in)	20.8
3.7	Tread, rear	b11 (in)	40.5-59

## Dimensions

4.2	Lowered mast height	h1(in)	76.2
4.3	Free lift height	h2(in)	2.8
4.4	Lift height	h3(in)	111.8
4.5	Extended mast height	h4(in)	134.6
4.9	Height of tiller in drive position min. / max.	h14(in)	30.9/51.2
4.15	Height, lowered	h13(in)	1.6
4.19	Overall length	l1 (in)	72.4
4.20	Length to face of forks	l2 (in)	27.6
4.21	Overall width	b1 (in)	49.2
4.22	Fork dimensions	s/e/l (in)	1.4/3.9/45.3 <sup>1)</sup>
4.25	Distance between fork-arms	b5 (in)	11.1-31.5
4.32	Ground clearance, centre of wheelbase	m2 (in)	1
4.33	Aisle width for pallets 1000X1200 crossways	Ast (in)	92
4.34	Aisle width for pallets 1000X1200 lengthways	Ast (in)	90.6
4.35	Turning radius	Wa (in)	58.5

## Performance

5.1	Travel speed, laden/ unladen	mph	2.7/2.8
5.2	Lift speed, laden/ unladen	fpm	21.7/31.5
5.3	Lowering speed, laden / unladen	fpm	25.6/21.7
5.8	Max . gradeability , laden/unladen	%	5/10
5.10	Service brake		Electromagnetic

## Electric-engine

6.1	Drive motor rating S2 60min	HP	0.6
6.2	Lift motor rating at S3 7.5%	HP	3
6.3	Battery acc. to DIN 43531 /35 / 36 A, B, C, no		no
6.4	Battery voltage, nominal capacity K5	V/Ah	2×12/85 <sup>2)</sup>
6.5	Battery weight (minimum)	lbs	2×55
6.6	Energy consumption acc . to VDI cycle	kWh/h	0.76

## Additional data

8.1	Type of drive control		DC-Speed Controller
8.4	Sound level at driver's ear acc. to EN 12053	dB(A)	<70

1)Optional: 1.4/ 3.9/ 37.4 2)Optional: 2x12V / 106

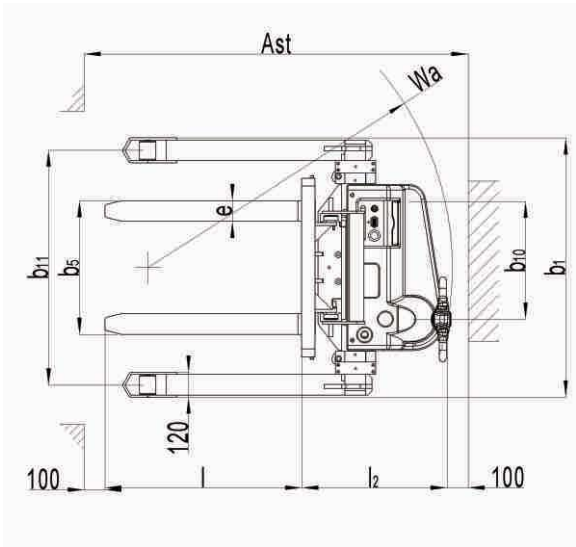
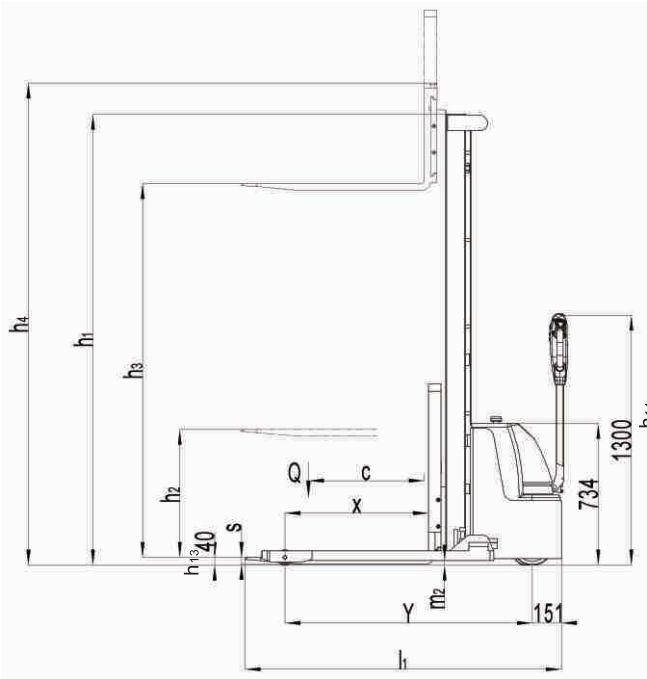
Other type data

1.2	Manufacturer's type designation		ECL22M-63	ECL22M-78	ECL22M-126	ECL22M-137
1.8	Load distance ,centre of drive axle to fork	x(in)		29.3		28.9
2.1	Service weight	lbs	1487	1531	1696	1729
2.2	Axle loading, laden front/rear	lbs	1619/2068	1663/2068	1751/2145	893/2156
2.3	Axle loading, unladen front/rear	lbs	1100/387	1122/409	1188/508	1210/519
4.2	Lowered mast height	h1 (in)	76.2	91.9	82.1	88
4.3	Free Lift height	h2 (in)	60.2	76	2.8	2.8
4.4	Lift	h3 (in)	60.2	76	123.6	135.4
4.5	Extended mast height	h4 (in)	83.5	99.2	146.5	158.3
4.33	Aisle width for pallets 1000X1200 crossways	Ast (in)	92			92.2
4.34	Aisle width for pallets 800X1200 lengthways	Ast (in)	90.2			90.6
6.6	Energy consumption acc. to VDI cycle	kWh/h	0.71			0.76

No.	
Type	ECL1035M

h3 (mm)	Q (kg)		
3500	600	500	
3200	800	600	
2900	1000	800	
2500	1000	800	
2000	1000	1000	

c(mm)	600	700	
-------	-----	-----	--



# ECL 22M

## Entry Level Stacker

### INTRODUCTION

The ECL 22M is an economic walkie-electric stacker, with rated capacity of 2200lbs and lifting height from 63inch to 137inch.

The compact and light design is suitable for a variety low duty applications in warehouses.



**AUTHORIZED DEALER**

#### **Noblelift North America Corp.**

Add: 2451 American Lane,  
Elk Grove Village, IL 60007  
TEL: +1-847-595-7100  
FAX: +1-847-595-7200  
WEB: [www.noblelift.us](http://www.noblelift.us)  
Email: [sales@noblelift.com](mailto:sales@noblelift.com)