

NOBLELIFT

**STRADDLE-LEG
WALKIE ELECTRIC STACKER**

3500/4400 LBS

(NEW)

ADVANTAGES

- The PS35-44L SL series is tailored to most pedestrian controlled stacking operations with capacities form 3520kg up to 4400kg.
- With the long mounted tiller the operator keeps safe and ergonomic distance to perform his work.
- Due to the gentle operating full proportional lifting system stacking operations becomes more safer and quicker.
- With the high-quality and state of the art top-brand components and technologies , the truck competes with leading well-known brands in the market.





▶ **Straddle leg**

Adjustable straddle leg design, suitable for diverse pallet sizes and more stability



▶ **For every application the right battery capacity**

with the PS-L SL series for every truck the right battery:

PS 35L SL with 270 Ah 3VBS battery
PS 44L SL with 350 Ah DIN 3PzS battery for long operations and multi-shifts.

CAN-BUS

▶ **CANBUS technology**

The CANBUS technology is due to less wiring more reliable.

For maintenance the CANBUS technology makes analysis and adjustments easier so that the downtime is lower than for trucks without CANBUS.

Digital signals further makes parts longer lasting than analogue signals.



▶ **Maintenance friendly**

The trucks design and the used components are tailored to make service and maintenance easy. All components are easy to reach when removing the main cover only with 2 screws. The drive wheel and the castor wheel are easy to exchange without craning the truck.



▶ **Electronic proportional lifting and lowering**

The electronically controlled proportional lifting system ensures accurate positioning and stacking operations at every lifting height.

In specific with high masts the electronic controlled proportional lifting performs at its best.

▶ **Long tiller design for ergonomics and safety**

In particular through the long tiller design the operator can always keep a safe distance to the truck during proceeding the work very ergonomically. The design ensures lower operational forces than trucks with a short tiller. The tillers operating height is naturally positioned to ergonomic, operator friendly controlling positions.

Specifically staking operations becomes more ergonomically and quicker due to the safe distance and better view to the forks. The 4 wheel design with the sideways long mounted tiller gives particular an exact and perfect view to the forks.



Robust and Reliable Design



The robust chassis with the strong 8mm thick apron protects the truck and the components against mechanical impacts from the outside.

In combination with the metal battery cover, the truck is well- equipped to reduce maintenance work and damages to a minimum.

Dirty floor environments have less influence to the vertical AC motor design as the components and the brake are out of the reach of direct impacts.

IP 54 protected controller, safe against dust and splash water.

German AC drive technology



The powerful German Schabmueller maintenance free AC Drive motor in combination with the German Kordel gearbox, Intorque brake and Wicke drive wheel give best performance, efficiency and reliability to reduce the running costs!

Whether smooth or fast acceleration is applied, the AC Drive gives always the right and direct response.

Type sheet for industrial truck acc. to VDI 219

Distinguishing mark

1.2	Manufacturer's type designation		PS 35L SL(4600)	PS 44L SL(4600)
1.3	Power(battery,diesel,petrol gas,manual)		Battery	
1.4	Operator type		pedestrian	
1.5	Load Capacity / rated load	Q (lbs)	3500	4400
1.6	Load centre distance	C (in)	23.6	
1.8	Load distance, centre of drive axle to fork	X (in)	27.2	26.5
1.9	Wheelbase	y (in)	54.3	58.7

Weight

2.1	Service weight	lbs	3219	3748
2.2	Axle loading, laden front/rear	lbs	2205/4542	2425/5732
2.3	Axle loading, unladen front/ rear	lbs	2249/970	2227/1521

Tires, chassis

3.1	Tires		Polyurethane (PU)	
3.2	Tire size, front	φ x w (in)	φ9×2.95	
3.3	Tire size, rear	φ x w (in)	φ3.3×3	
3.4	Additional wheels (dimensions)	φ x w (in)	φ5.9x2	
3.5	Wheels, number front/ rear(x=driven wheels)		1x+1/4	
3.6	Tread, front	b10 (in)	20.5	
3.7	Tread, rear	b11 (in)	43.1-54.9	

Dimensions

4.2	Lowered mast height	h1(in)	83	88
4.3	Free lift height	h2(in)	60	60
4.4	Lift height	h3(in)	178	178
4.5	Extended mast height	h4(in)	200	205
4.9	Height of tiller in drive position min. / max.	h14(in)	33.5/54.5	
4.15	Height, lowered	h13(in)	1.97	
4.19	Overall length	l1 (in)	78.9	84.1
4.20	Length to face of forks	l2 (in)	33.6	38.8
4.21	Overall width	b1 (in)	32.3/(48-59.8)	
4.22	Fork dimensions	s/e/l (in)	1.6x4.7x45.3	
4.25	Distance between fork-arms	b5 (in)	10-28.7	
4.32	Ground clearance, centre of wheelbase	m2 (in)	1.3	
4.33	Aisle width for pallets 1000X1200 crossways	Ast (in)	100.6	105.3
4.34	Aisle width for pallets 1000X1200 lengthways	Ast (in)	99.5	104.4
4.35	Turning radius	Wa (in)	66.1	70.5

Performance

5.1	Travel speed, laden/ unladen	mph	3.5/3.7	3.4/3.7
5.2	Lift speed, laden/ unladen	fpm	25.6/39.4	25.6/39.4
5.3	Lowering speed, laden / unladen	fpm	39.4/27.6	39.4/27.6
5.8	Max . gradeability , laden/unladen	%	6/12	6/10
5.10	Service brake		Electromagnetic	

Electric-engine

6.1	Drive motor rating S2 60min	HP	1.7	2.3
6.2	Lift motor rating at S3 4.5%	HP	4.3	4.3
6.3	Battery acc. to DIN 43531 /35 / 36 A, B, C, no		3VBS	3PZS
6.4	Battery voltage, nominal capacity K5	V/Ah	24/270	24/350
6.5	Battery weight (minimum)	lbs	506	634
6.6	Energy consumption acc . to VDI cycle	kWh/h	1.59	1.79

Additional data

8.1	Type of drive control		AC -Speed Control	
8.4	Sound level at driver's ear acc. to EN 12053	dB(A)	69	

Designation	Lowered mast height h1(in)	Free Lift height h2(in)	Lift height h3(in)	Extended mast height h4(in)
PS 35L SL				
Two stage mast	77	—	111	133
	83	—	123	145
	91	—	139	161
Two stage mast FFL (Full-Free-Lift)	77	55.5	111	133
	83	61.4	123	145
	91	69.3	139	161
Three stage mast	79	—	167	188
	83	—	178	200
Three stage mast FFL (Full-Free-Lift)	75	52	155	176
	79	55.9	167	188
	83	59.8	178	200
PS 44L SL				
Two stage mast	82	—	111	138
	88	—	123	150
	96	—	139	165
	78	51.6	104	130
Two stage mast FFL (Full-Free-Lift)	82	55.5	111	138
	88	61.4	123	150
	96	69.3	139	165
	84	—	167	193
Three stage mast	88	—	178	205
	78	51.6	155	181
	84	55.9	167	193
Three stage mast FFL (Full-Free-Lift)	88	59.8	178	205

Type	PS 35L SL
Mast	208 in

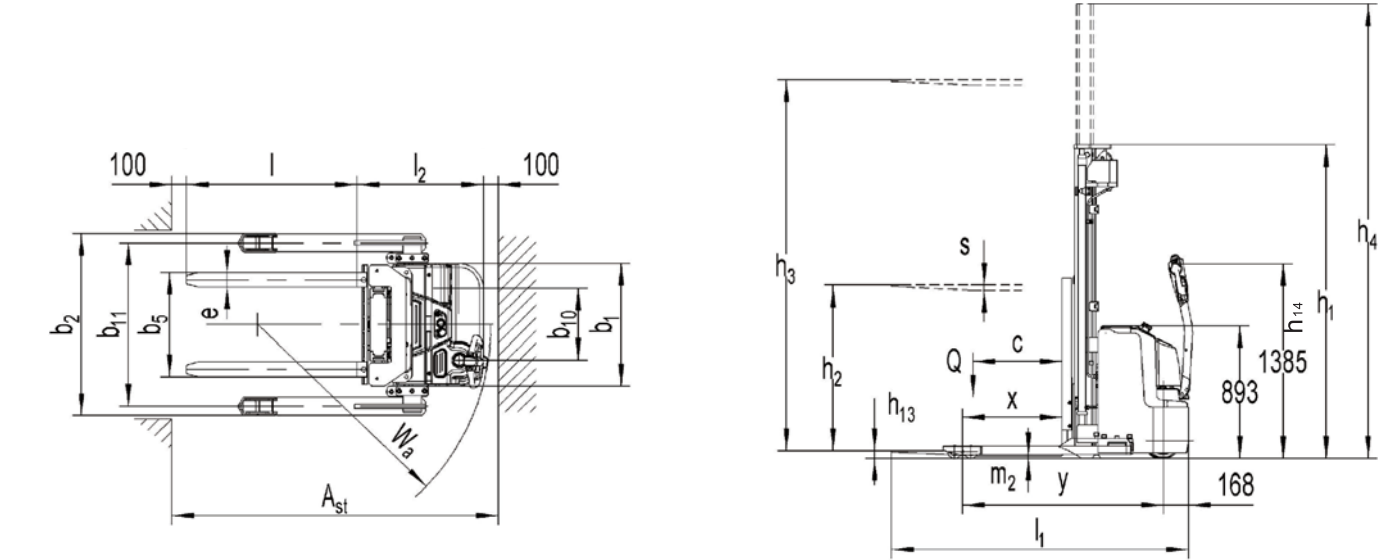
Type	PS 44L SL
Mast	181 in

h3 (in)	Q (lb)		
208	1763	1543	
196	1984	1764	
181	2204	1984	
169	2425	2205	
157	2866	2646	
145	3086	2866	
133	3527	3307	

h3 (in)	Q (lb)		
181	2204	1984	
169	2645	2425	
157	3086	2866	
141	3527	3307	
130	3968	3748	
118	4409	4189	

c(in)	24	28	
-------	----	----	--

c(in)	24	28	
-------	----	----	--



PS35L SL/PS44L SL

**Straddle-leg Electric Pedestrian Stacker
with capacities of 3520/4400lbs**

- Ergonomic, Compact and Safe Long Tiller Design
- Precise Lifting and Lowering with Full Proportional Hydraulic System
- Powerful, Maintenance Free German AC Power Train
- Core Components from Top Quality Brands
- 4 Wheel Structure for Stability



AUTHORIZED DEALER

Noblelift North America Corp.

Add: 2451 American Lane,
Elk Grove Village, IL 60007
TEL: +1-847-595-7100
FAX: +1-847-595-7200
WEB: www.noblelift.us
Email: sales@noblelift.com